



Iowa Ag News – Cattle on Feed

Upper Midwest Region - Iowa Field Office · 210 Walnut Street Ste 833 · Des Moines IA 50309 · (515) 284-4340 · (800) 772-0825
fax (855) 271-9802 · www.nass.usda.gov

Cooperating with the Iowa Department of Agriculture and Land Stewardship

February 21, 2014

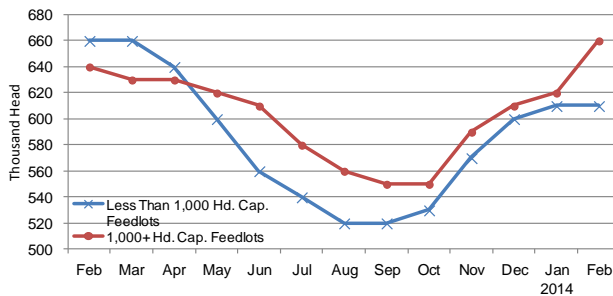
Media Contact: Greg Thessen

Cattle and calves on feed for slaughter market in Iowa for all feedlots totaled 1,270,000 on February 1, 2014 according to the USDA, National Agricultural Statistics Service, Iowa Field Office. The inventory is up 3 percent from January 1, 2014, but down 2 percent from February 1, 2013. Feedlots with a capacity greater than 1,000 head had 660,000 head on feed, up 6 percent from last month and up 3 percent from last year. Feedlots with a capacity less than 1,000 head had 610,000 head on feed, unchanged from last month, but down 8 percent from last year.

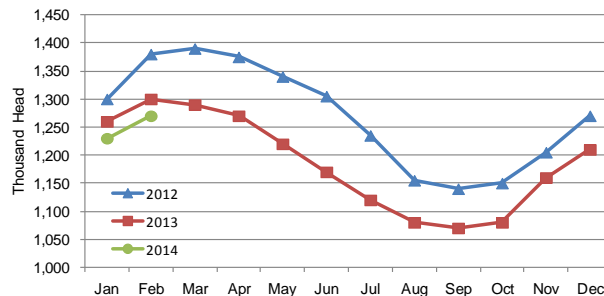
Placements during January totaled 179,000 head, a decrease of 6 percent from last month and last year. Feedlots with a capacity greater than 1,000 head placed 114,000 head, up 19 percent from last month and up 4 percent from last year. Feedlots with a capacity less than 1,000 head placed 65,000 head. This is down 32 percent from last month and down 19 percent from last year.

Marketings for January were 132,000 head, down 20 percent from last month and down 8 percent from last year. Feedlots with a capacity greater than 1,000 head marketed 71,000 head, down 15 percent from last month and down 8 percent from last year. Feedlots with a capacity less than 1,000 head marketed 61,000 head, down 24 percent from last month and down 9 percent from last year. Other disappearance totaled 7,000 head.

Cattle on Feed, Inventory by Feedlot Capacity, Iowa: Current Month & Past 12 Months



Cattle on Feed, Inventory on all Feedlots, Iowa: 2012-2014



All Cattle on Feed, Iowa

Item	Lots 1,000+ Head	Lots Less than 1,000 Head	All Lots
	(1,000 Head)	(1,000 Head)	(1,000 Head)
Cattle on Feed, January 1, 2014	620	610	1230
January Placements	114	65	179
January Marketings	71	61	132
January Other Disappearance	3	4	7
Cattle on Feed, February 1, 2014	660	610	1270

Cattle on Feed: Number on Feed, Placements, Marketings, and Other Disappearance by Month, 1,000+ Capacity Feedlots

[Cattle and calves on feed are animals for slaughter market being fed a ration of grain or other concentrates and are expected to produce a carcass that will grade select or better.]

State	Cattle on Feed February 1			Placements during January			Marketings during January			January Disappearance other than Slaughter ¹		
	2013	2014	'14 as % of '13	2013	2014	'14 as % of '13	2013	2014	'14 as % of '13	2013	2014	'14 as % of '13
	(1,000 Head)	(1,000 Head)	(Percent)	(1,000 Head)	(1,000 Head)	(Percent)	(1,000 Head)	(1,000 Head)	(Percent)	(1,000 Head)	(1,000 Head)	(Percent)
Arizona	275	272	99	30	31	103	26	32	123	1	1	100
California	475	520	109	55	70	127	50	58	116	5	2	40
Colorado	1,010	970	96	190	190	100	175	170	97	5	10	200
Idaho	225	215	96	37	41	111	40	45	113	2	1	50
Iowa	640	660	103	110	114	104	77	71	92	3	3	100
Kansas	2,110	2,050	97	425	435	102	410	385	94	15	10	67
Minnesota	136	137	101	19	18	95	15	10	67	1	1	100
Nebraska	2,470	2,460	100	465	545	117	460	470	102	15	15	100
Oklahoma	325	265	82	51	47	92	64	40	63	2	2	100
South Dakota ..	225	240	107	36	54	150	40	41	103	1	3	300
Texas	2,620	2,440	93	385	405	105	460	385	84	25	20	80
Washington	234	206	88	29	42	145	40	35	88	2	2	100
Other States	325	325	100	37	37	100	35	46	131	2	1	50
United States ...	11,070	10,760	97	1,869	2,029	109	1,892	1,788	95	79	71	90

(D) Withheld to avoid disclosing data for individual operations.

¹ Includes death loss, movement from feedlots to pasture, and shipments to other feedlots for further feeding.

CATTLE ON FEED REVISIONS

Revision Policy: Revisions to previous estimates are made to improve month to month relationships. Estimates for the previous month are subject to revision in all States each month when current estimates are made. In February, all monthly estimates for the previous twelve months are reviewed and subject to revisions. The reviews are primarily based on slaughter data, state check-off and any other data that may have been received after the original estimate was made. Estimates will also be reviewed after data from the Census of Agriculture are available.

Cattle on Feed Revisions, Iowa: December 2012 – January 2014

	Inventory ¹			Placements			Marketings			Other Disappearance		
	Lots 1,000+ Head	Lots Less than 1,000 Head	All Lots	Lots 1,000+ Head	Lots Less than 1,000 Head	All Lots	Lots 1,000+ Head	Lots Less than 1,000 Head	All Lots	Lots 1,000+ Head	Lots Less than 1,000 Head	All Lots
	(1,000 Head)	(1,000 Head)	(1,000 Head)	(1,000 Head)	(1,000 Head)	(1,000 Head)	(1,000 Head)	(1,000 Head)	(1,000 Head)	(1,000 Head)	(1,000 Head)	(1,000 Head)
Dec 2012	610	660	1,270	68	80	148	64	76	140	4	4	8
Jan 2013.....	610	650	1,260	110	80	190	77	67	144	3	3	6
Feb	640	660	1,300	61	49	110	68	45	113	3	4	7
Mar	630	660	1,290	72	47	119	68	65	133	4	2	6
Apr.....	630	640	1,270	89	41	130	97	78	175	2	3	5
May.....	620	600	1,220	65	39	104	72	77	149	3	2	5
Jun.....	610	560	1,170	45	66	111	73	82	155	2	4	6
Jul.....	580	540	1,120	48	56	104	64	73	137	4	3	7
Aug.....	560	520	1,080	66	73	139	73	69	142	3	4	7
Sep.....	550	520	1,070	89	112	201	87	98	185	2	4	6
Oct.....	550	530	1,080	131	141	272	89	98	187	2	3	5
Nov.....	590	570	1,160	122	129	251	100	95	195	2	4	6
Dec.....	610	600	1,210	96	95	191	84	80	164	2	5	7
Jan 2014.....	620	610	1,230	114	65	179	71	61	132	3	4	7

¹Inventory as of the first of the month.

The complete report can be found under **Publications** on the USDA NASS website at www.nass.usda.gov.